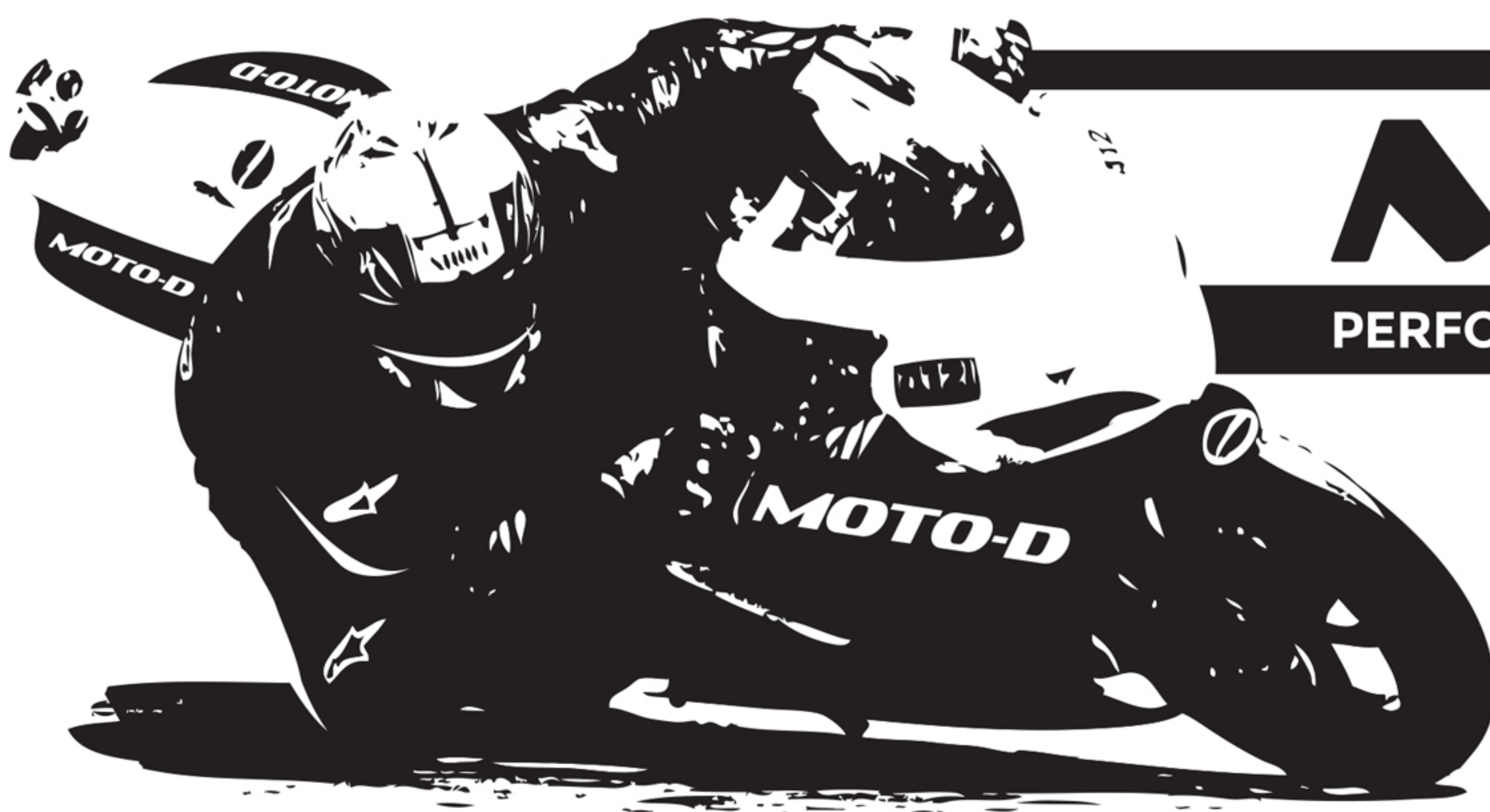
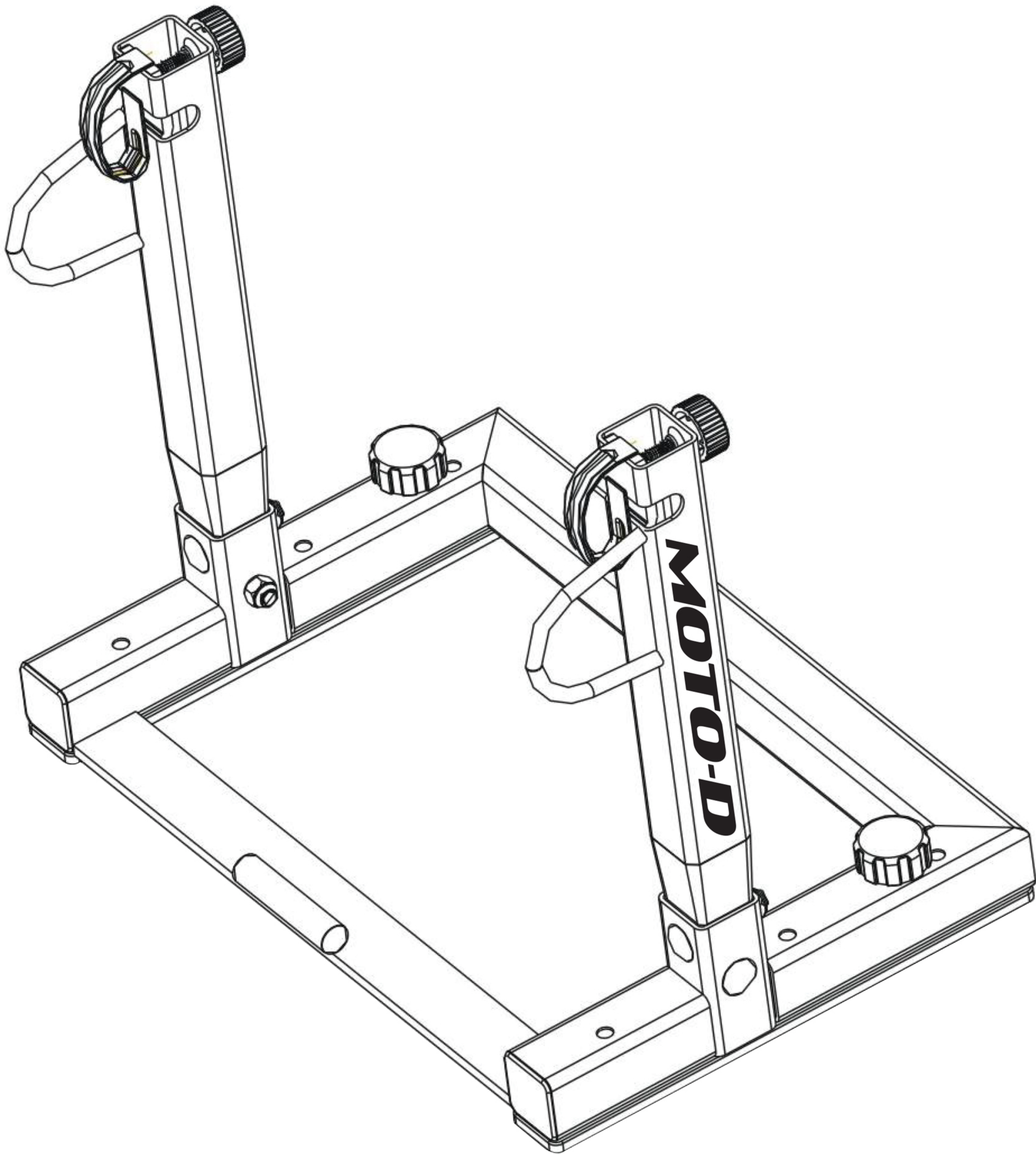


STRAPLESS TRANSPORT STAND

— INSTALLATION INSTRUCTIONS —



MOTO-D

PERFORMANCE RIDING MOTORCYCLE COMPONENTS

No Tie-Downs or Straps

100% Secure

Trusted Since 2004

Strapless Transport Stands by MOTO-D are the original motorcycle trailer restraint system used to secure your sportbike and dirtbike motorcycle without the use of wheel chocks, straps, or tie-downs. STS consists of an upright tower that bolts to your trailer floor and secures the motorcycle by holding the rear axle of the bike.

Strapless Transport Stands are 100% secure, trusted since 2004, and work great in enclosed trailers, open trailers, shipping crates, cargo vans, toy haulers, and long bed pick-up trucks. Thank you for your purchase.

► Since the STS is narrower than most motorcycles, which allows for a compact fit in your trailer, most users install the STS in the nose of their trailer and back their bike into the stand for the easiest loading and unloading. Others chose to mount the STS at the tail of the trailer and then roll their bikes around the stand before backing it in.

INSTALL

Step 1: With both of the mounting plates (1) attached to the bottom of the stand base (5), place the stand in the desired mounting location at the nose of the trailer. (NOTE, because no tie downs are needed you can position your bike much closer to walls, other bikes, etc, but allow enough room for loading and unloading). We suggest no closer than 6 inches from any wall but larger bikes and with lever guards may require up to 12 inches.

Step 2: Using a pencil or marker, outline ONLY the mounting plates with the hole for the locking mechanism. Remove the first mounting plate from the stand and place inside the outline on the floor, now mark the four bolt hole locations onto the floor.

Step 3: Using a 11/32" drill bit, drill the three marked holes, install the mounting plate using 4 of the included flat head bolts (2). (NOTE, do not over tighten, if you over tighten the mounting bolts while attaching to a wood floor this may cause the mounting plate to warp and not allow the stand to slide in and out properly).

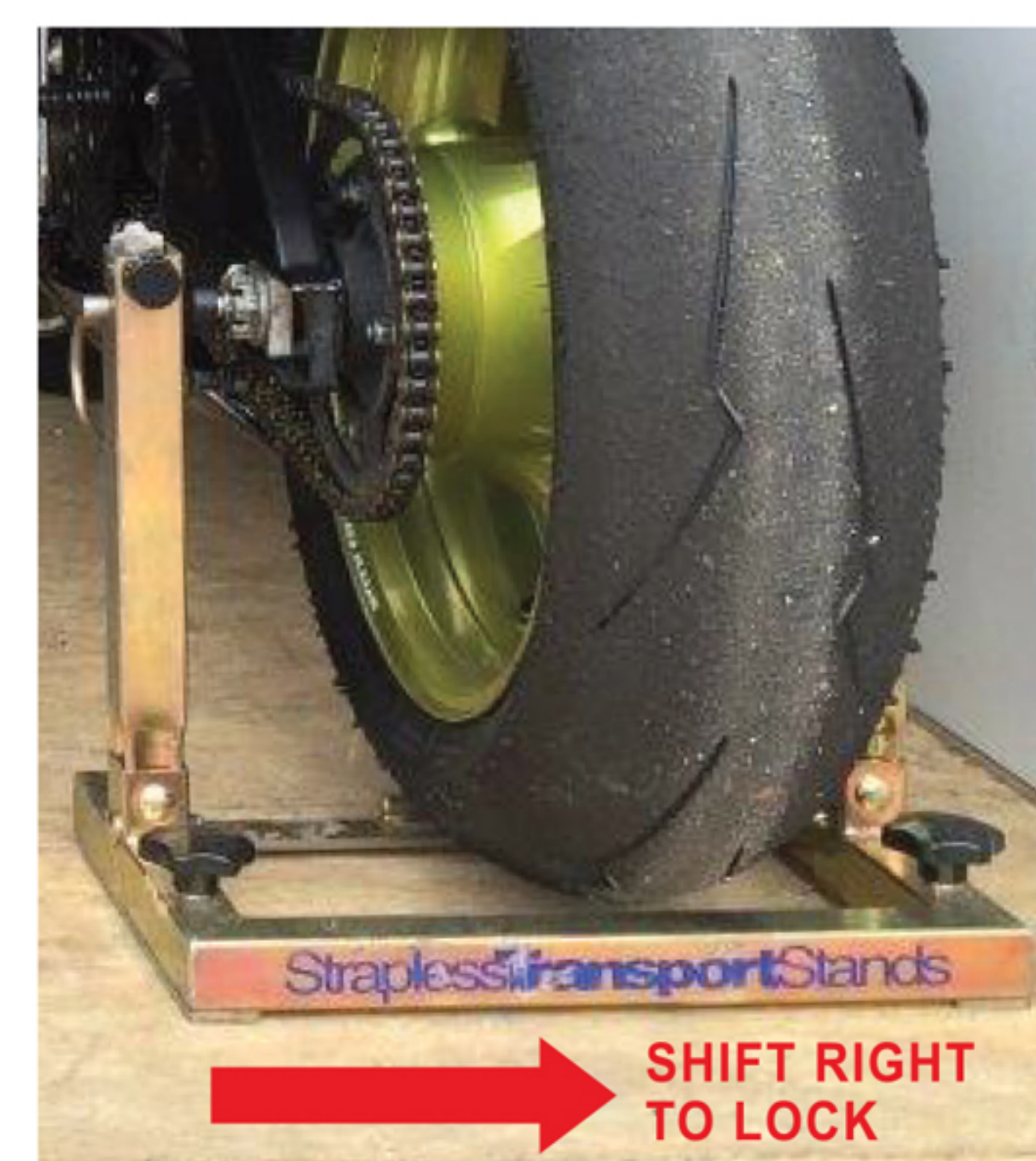
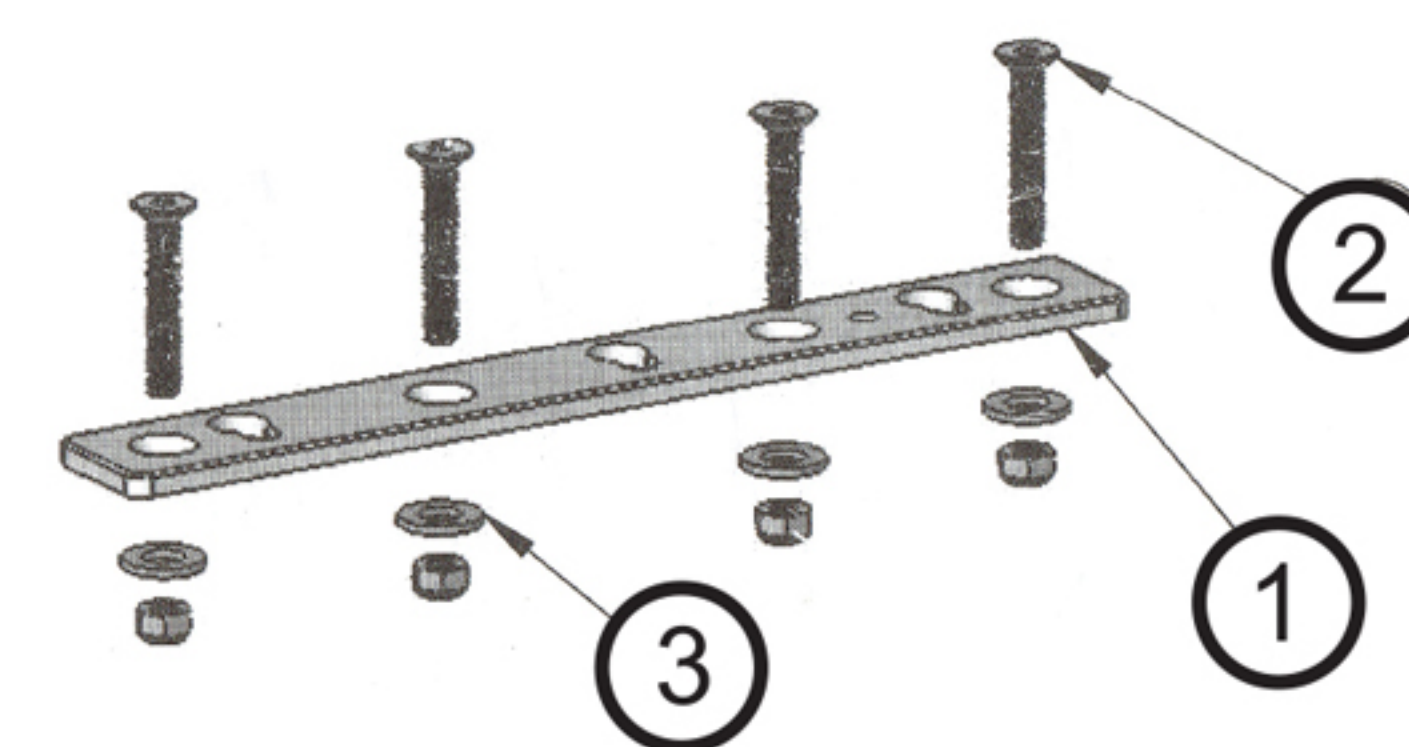
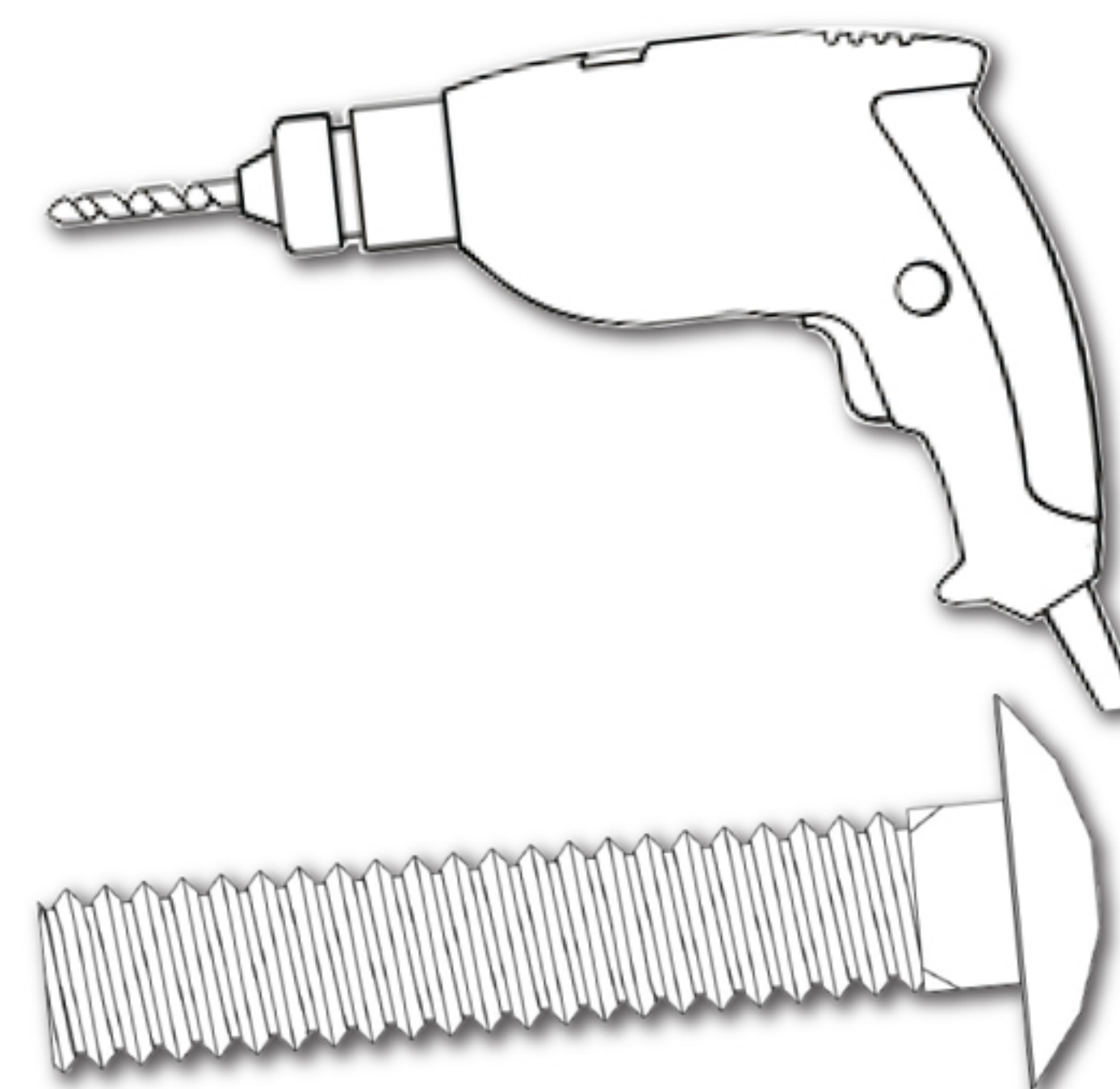
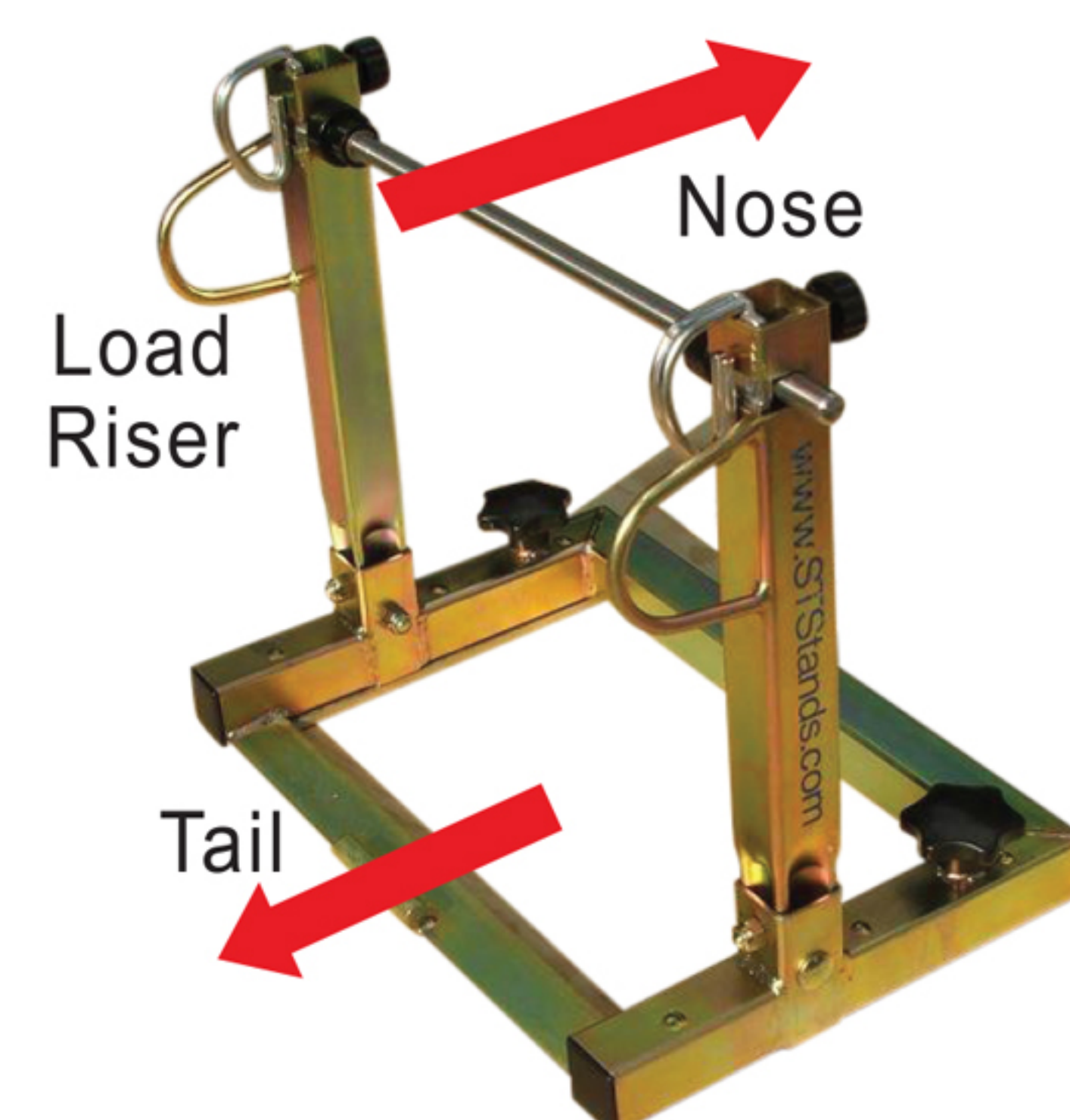
Step 4: Secure the mount plate to the floor by tightening the bolts from the underside using the supplied washers and nuts (3). A small amount of blue Loctite is recommended.

Step 5: Slide the stand into the installed mounting plate, and carefully check the outline of the second mounting plate. Repeat steps 2, 3 & 4 on the second mounting plate. (NOTE, it is important that you take great care to get the mounting plates in the proper position in relation to the base of the stand. Otherwise the stand may be hard to remove and install.

Step 6: Insert the stand base over the mounting plates and secure the base to plates by sliding the base to the right until the locking pins on the base bottom sits flush inside the mounting plate holes, tighten the bottom turn knobs (10) on the base all the way to lock into the plates.

Step 7: Insert the upright towers (6,7) into the base making sure the towers are pointing forward and insert the 2 supplied bolts for each side, tighten (8,9). A small amount of blue Loctite is recommended.

Step 8: Check installation to make sure everything is tight.



**Loading and unloading a motorcycle into the MOTO-D
Strapless Transport Stands takes 1 minute or less.**

LOADING

Step 1: Make sure the stand is securely installed into the mounting plates and the turn knobs on base bottom are tight and engaged.

Step 2. Insert the correct axle bar and spacers into the rear axle of your motorcycle. Position the tail of the motorcycle pointing directly towards the front of the stand.

► *If you are securing bike nose first into the trailer with the STS towards the tail, roll bike forward and around the STS (you can't pass through it) and then prepare to back it in.*

Step 3: Now stand directly in front of your motorcycle at its front nose section facing the tail, grab the handle bars and hold the bike upright. Push firmly and roll the bikes tail backwards towards the STS, keeping the rear tire centered in between the towers until reaching the load riser brackets (the round welded hoops located in the middle of the towers).

Step 4: As the axle bar rests up against the load risers, push firmly so that the axle bar ends roll up and over the load risers bringing the bikes rear tire up and off the floor (the bike must be straight up and down and centered). Once the center of the rear tire has passed over the load risers, the axle bar will rest on the hoops.

Step 5: You can either walk around to the back of the motorcycle and grab the rear wheel and pull the motorcycle into to the STS (recommended when first using the STS). Or you can simply give the motorcycle a good shove backwards and it will slide fully into the axle bar receiving holes.

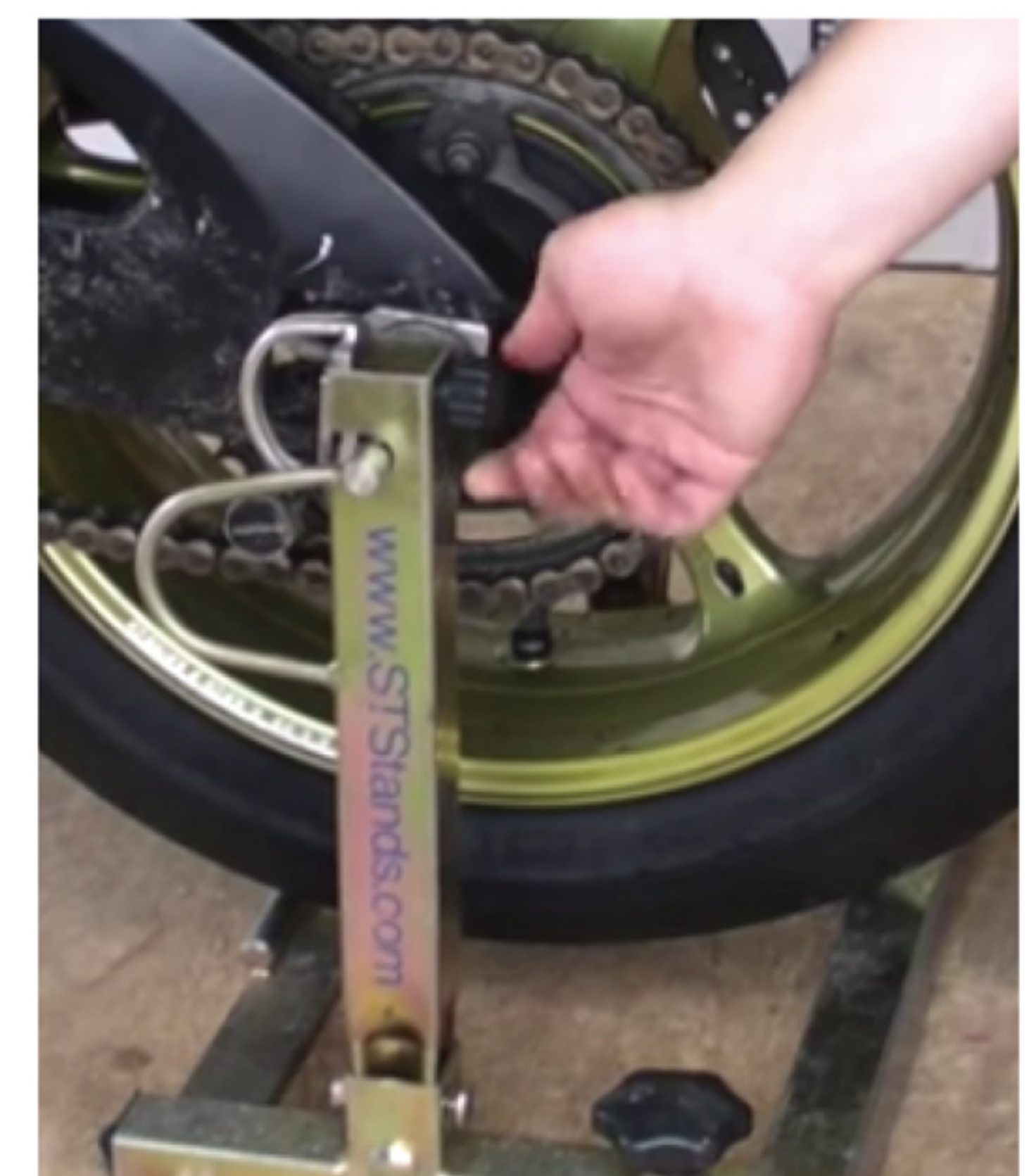
Step 6: Insert the slide locks (11) into the top of the STS towers, so the slot is in line with the axle bar. The slide locks need to bottom out on the axle bar for the bike to be secured. If you wiggle the handle bars of the bike just slightly while pushing down on the slide locks they should fall into place. If the bike is at an angle you may need to grab the bike by the front wheel and slide it over to get the bike in line with the stand for the slide locks to fall into place.

Step 7: Tighten the slide lock turn knobs (12) all the way, locking them into the towers and securing the axle bar holding the bike in place.

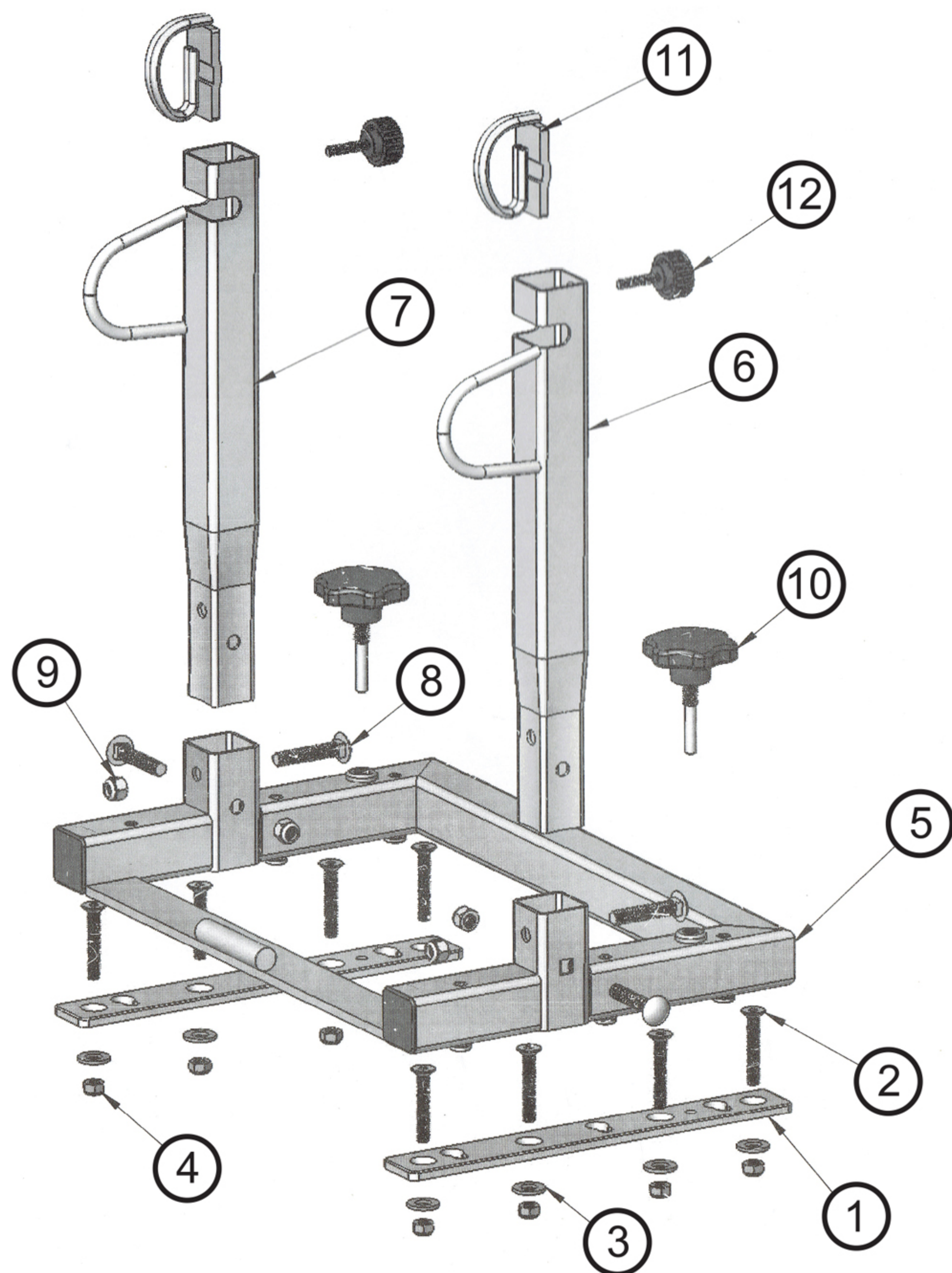
UNLOADING

Step 1: Remove the slide locks on both sides of the towers, grab the handlebars and roll the bike forward out of the stand. You may need to wiggle the handle bars of the motorcycle slightly while pulling out the slide locks, this will reduce the binding of the axle bar against the slide locks.

Step 2: Remove the axle bar from the stand and place back inside the tower for safe keeping. Do not ride motorcycle with axle bar installed in the bike.



Watch how quick we load and unload (you can do it too)
www.youtube.com/motodracing



STRAPLESS TRANSPORT STANDS		
PARTS LIST		
#	Qty	Description
1	2	Mounting Plate
2	8	Mounting Plate Bolt
3	8	Mounting Plate Washer
4	8	Mounting Plate Nut
5	1	Stand Base
6	1	Left Upright
7	1	Right Upright
8	4	Carriage Head Bolts
9	4	10mm Lock Nuts
10	2	Large Knob
11	2	Slide Locks
12	2	Small Knob

FAQ's

Q1. Are the Strapless Transport Stands (STS) removable?

A1. Yes, the STS has two base plates that bolt to the trailer floor, and the base stand is locked into those mounting plates. The STS base tower can be installed or removed in less than 30 seconds leaving only the flush floor mounted plates.

Q2. Can I haul different bikes (make, model, year) in the STS?

A2. The base stand of the STS is the same for all motorcycles, the only part of the system that varies is the axle bar kit. You will need the appropriate axle bar kit for each motorcycle you plan to haul.

Q3. What if I buy a new motorcycle, will I still be able to use my STS?

A3. Yes, as long as your new motorcycle has a hollow rear axle and is listed on the "Fitment Page" of our website.

Q4. What holds the front of the motorcycle while in transit?

A4. Since the STS holds the motorcycle securely with a steel bar through the rear axle, there is no need for any other restraints. The motorcycle can't lean, and the front can't move side to side, so there is no need for a wheel chock or tie-downs. Your motorcycle will ride on its own suspension, and is 100% secure.

Q5. Can I load my motorcycle facing backwards?

A5. YES, you can mount the stand in the trailer nose or tail to have your bike facing backwards, forwards, or sideways.

Q6. Can I load my motorcycle by myself (one person)?

A6. YES, this system is specifically designed for loading and unloading easily by one person.

Q7. Does hauling the motorcycle with a bar through the rear axle damage my bike?

A7. NO, the rear axle is one of the strongest parts on your motorcycle.

Q8. Can I buy additional mounting hardware OR spare parts to use the STS in more than one trailer?

A8. YES, you can order additional mounting plate kits. Nearly every part of the stand is available for replacement in case of loss or damage.